



# 1 KB DNA Ladder

Catalog Number	Pack Size
ZT-1KB-1	50µg
ZT-1KB-5	50µg×5

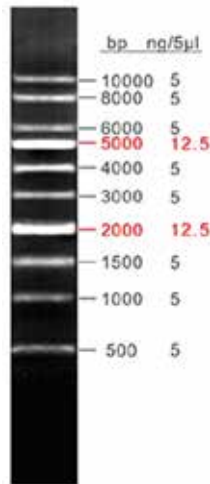
## Content and Storage Condition

Content	Shipping Condition	Storage Condition
1 kb DNA Ladder	4°C	4°C for 3 months, -20°C for long term storage

### Description

1 kb ladder is used for determining the size of double-stranded DNA from 100 to 10,000 base pairs. The ladder consists of 15 linear double-stranded fragments. The 500bp and 3000 bp fragments are present at increased intensity to allow easy identification. This ladder is pre-mixed with loading dye and is ready to use.

**Image of 5ul ladder run at 1% agarose concentration, 1x TAE in 8cm gel, 45min at 7V/cm;**



**Recommended Loading:** 5 µl/lane

**Concentration:** Typical Bands 10ng/5µl, Other Bands 4ng/5µl

**Recommended Electrophoresis Condition:** 5 µl/lane, 8cm 1% Agarose Gel, 1xTAE, 7V/cm, 1h.

### Warning

Do not preserve the product when the package is damaged.

